



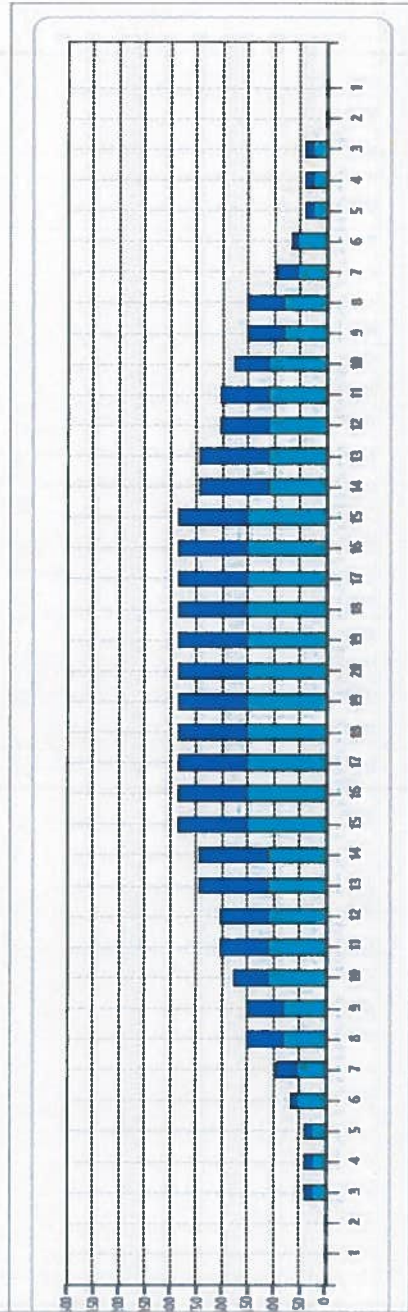
Kevatpotti26



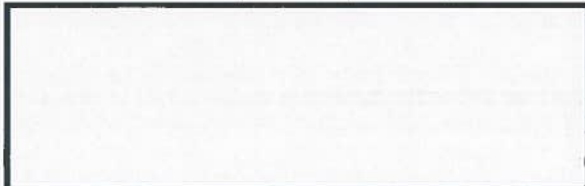
Oil Pattern Distance	39	Reverse Brush Drop	38	Oil Per Board	41 ul
Forward Oil Total	10.373 mL	Reverse Oil Total	9.102 mL	Volume Oil Total	19.475 mL
Tank Configuration	Multi Tank	Tank A Conditioner	Terrain	Tank B Conditioner	Terrain

	START	STOP	LOADS	SPEED	BUFFER	TANK	CROSSED	START	END	FEET	T.OIL
1	3L	3R	2	14	3	A	70	0.0	1.9	1.9	2870
2	6L	6R	2	14	3	A	58	1.9	5.8	3.9	2378
3	8L	8R	2	18	3	A	50	5.8	10.9	5.1	2050
4	10L	10R	2	18	3	A	42	10.9	16.0	5.1	1722
5	15L	15R	3	18	3	A	33	16.0	23.6	7.6	1353
6	2L	2R	0	26	3	A	0	23.6	39.0	15.4	0

	START	STOP	LOADS	SPEED	BUFFER	TANK	CROSSED	START	END	FEET	T.OIL
1	2L	2R	0	26	3	B	0	39.0	32.0	-7.0	0
2	13L	13R	3	18	3	B	45	32.0	24.4	-7.6	1845
3	11L	11R	2	18	3	B	38	24.4	19.3	-5.1	1558
4	8L	8R	2	18	3	B	50	19.3	14.2	-5.1	2050
5	7L	7R	2	14	3	B	54	14.2	10.3	-3.9	2214
6	3L	3R	1	14	3	B	35	10.3	8.4	-1.9	1435
7	2L	2R	0	14	3	B	0	8.4	0.0	-8.4	0



Cleaner Ratio Main Mix 19:1 Forward
 Cleaner Ratio Back End Mix 19:1 Reverse
 Cleaner Ratio Back End Distance 59 Combined
 Buffer RPM: 4 = 700 | 3 = 500 | 2 = 200 | 1 = 100



Item	3L-7L 15L-18R	8L-12L 18L-18R	13L-17L 18L-18R	18L-18R 17R-13R	18L-18R 12R-8R	18L-18R 7R-3R
Description	Outside:Middle	Middle:Middle	Inside:Middle	Middle:Inside	Middle:Middle	Middle:Outside
Track Zone Ratio	5	1.62	1.06	1.06	1.62	5

